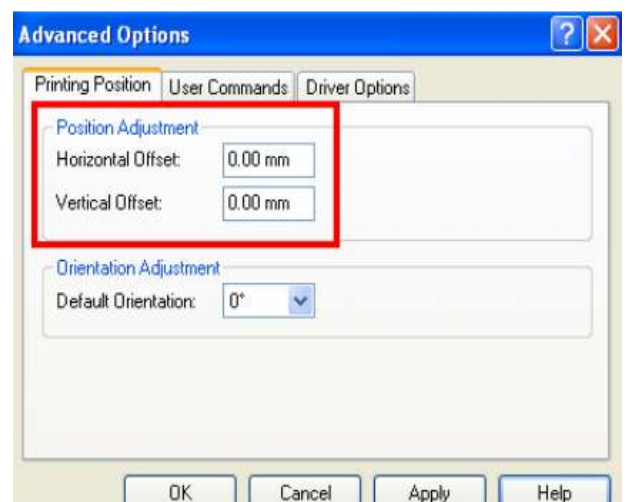
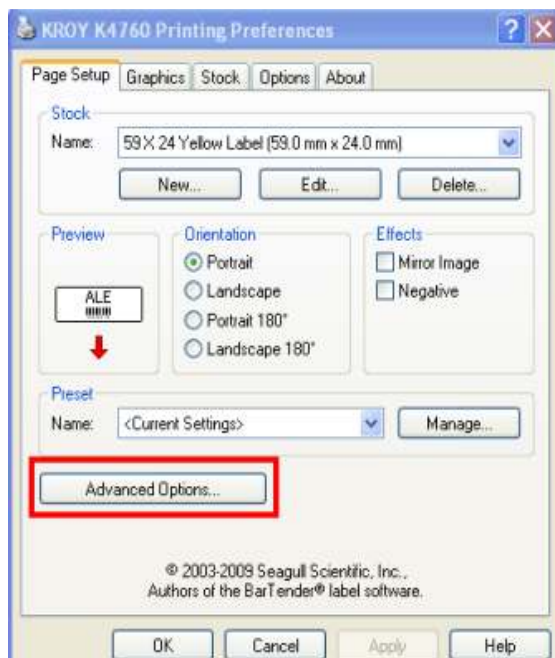


## Windows Driver Image Position Adjustment

If the position of the printed image needs to be adjusted this can be achieved by a setting in the Advanced Options of the Printer Driver.

When setting up your labels in the driver or at time of print by clicking “Document Properties” please select Advanced Options.

A Vertical and/or Horizontal Offset command can be added, please see below:



- **Horizontal Offset.** A positive value will move the printed image to the right. A negative value will move the image to the left.
- **Vertical Offset.** A positive value will move the printed image downward. A negative value will move the image upward.

Once the offset has been added click on Apply then OK.