
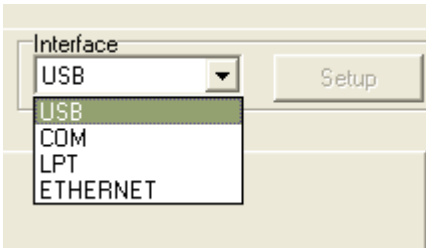
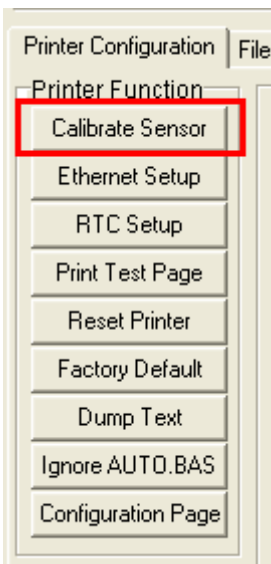


Kroy K4452NB K4453NB Calibration

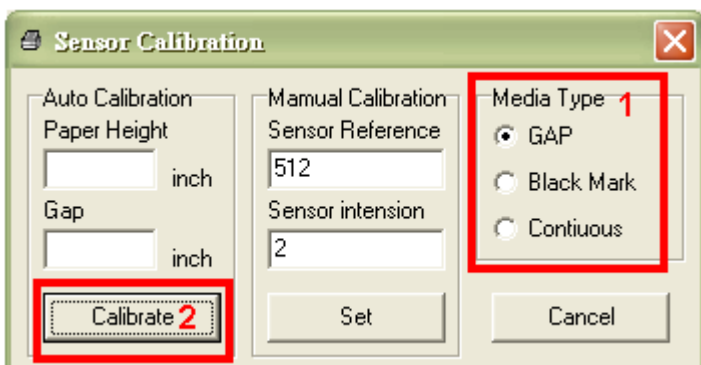
1. Connect PC and printer by RS232, USB, parallel or Ethernet cable. Turn on the printer.
2. Double click on the Diagnostic utility icon  `DiagTool.exe` to start the software.
You can get this tool from the driver CD or to download from our website.
3. Select the PC interface connected with bar code printer then click the “Setup” button. (Default setting is USB interface)



4. Click the “Calibrate Sensor” button.



5. Select the media type (Gap/Black mark/Continue) and calibration type (Auto/Manual) to calibrate the sensor specified in the printer setup group media sensor field.
For the general media you only need to select the media type then click the “Calibrate” button.



6. For gap or black mark type media, the printer will feed 2 to 3 labels to calibrate the sensor sensitivity automatically.
For continue media, the printer will not feed the label to calibrate the sensor sensitivity automatically.