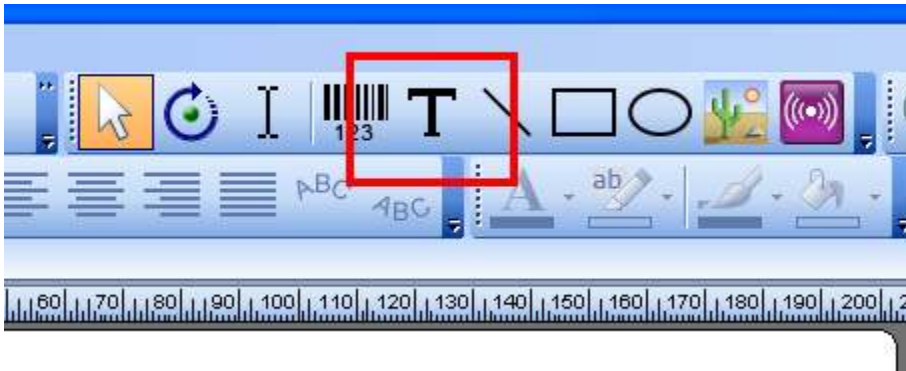
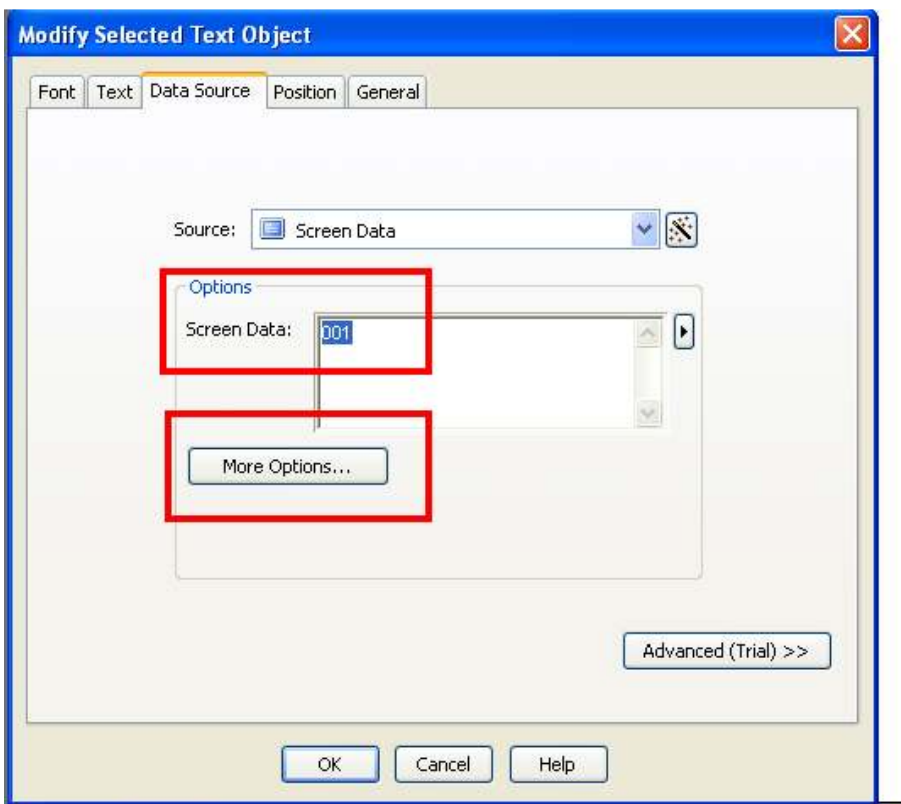


Bartender / Sequential Numbering

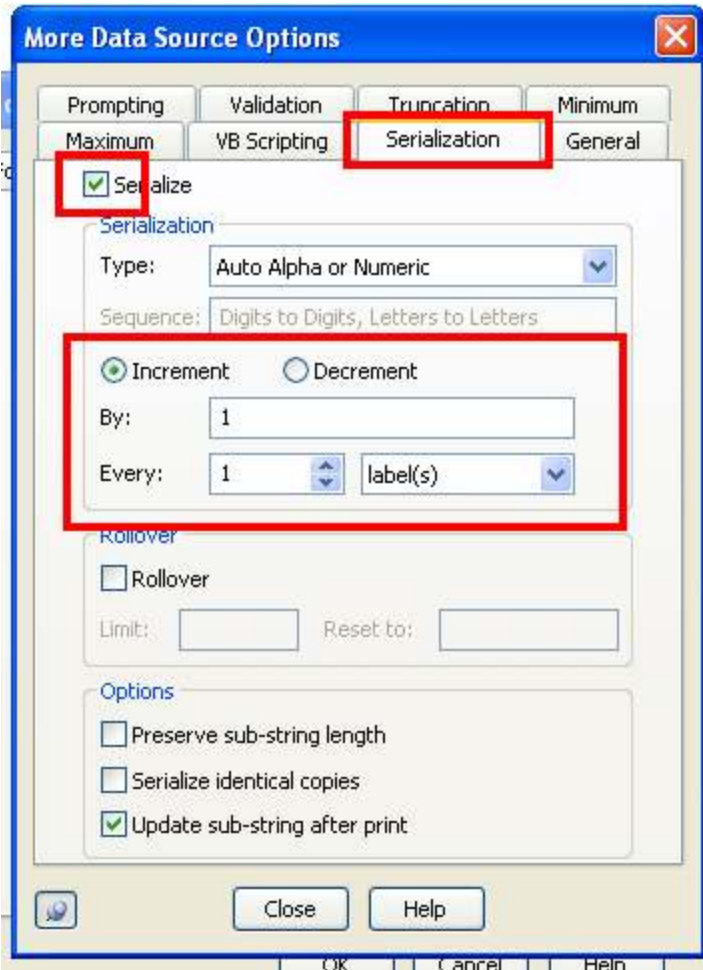
Add a text string by clicking on the text tool as shown below:



Enter your data in to the Data Source and click on More Options as shown below:



Click the Serialization tab, as shown below:
Tick the Serialize tick box.
Set the number of increments accordingly.



Ticking the “Update sub-string after print” tick box will allow the software to record the last number printed with no further input from the user.
The next batch of printing will then start with the last printed number.
This also applies to barcodes.