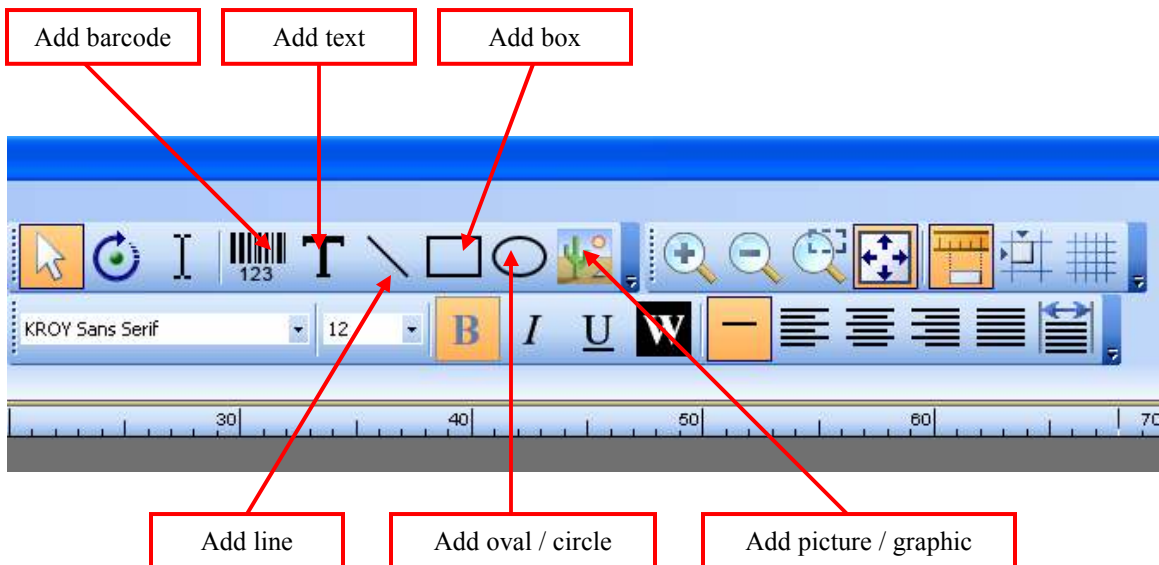
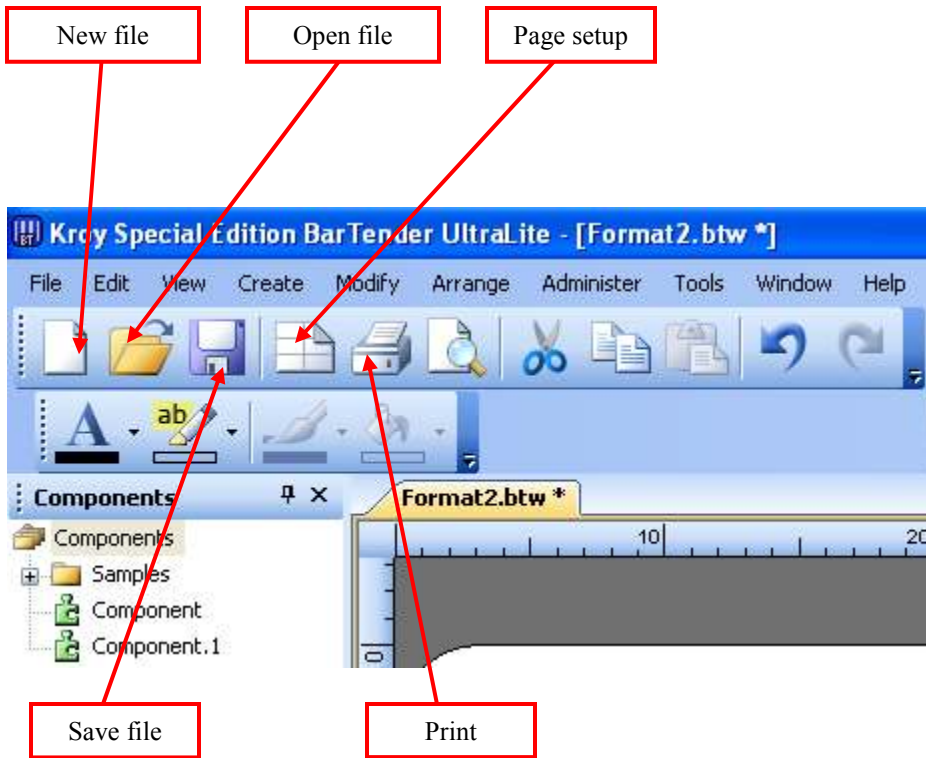


Bartender Helpful Hints



Quick copy label item:

Hold the Ctrl (Control) key, click and drag the item.



View Options / Alignment

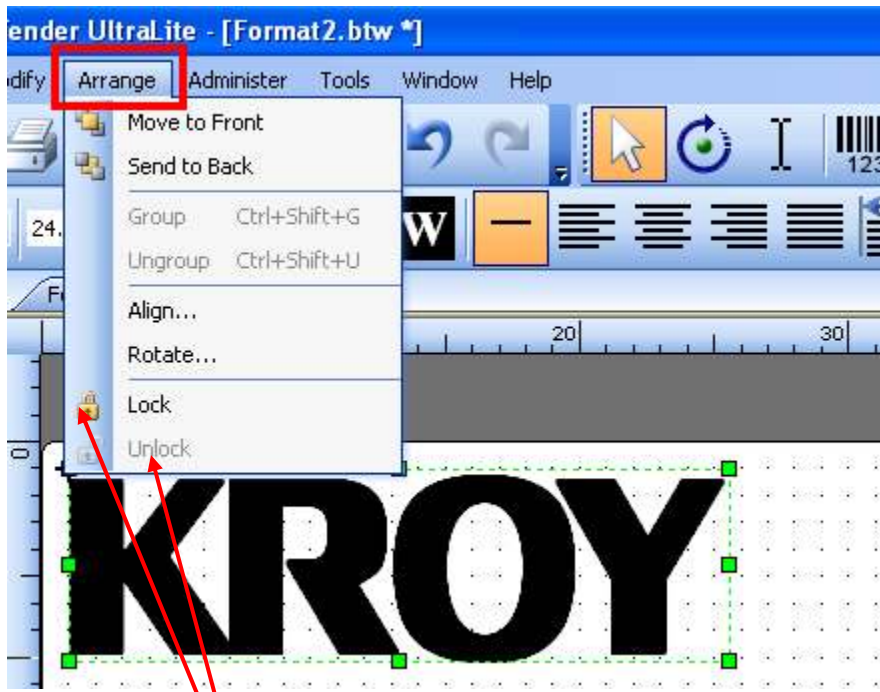
The screenshot shows the software interface with the "View" menu open. The "View Options..." option is highlighted. A red box around the "View" menu and another red box around "View Options..." are connected by a red arrow pointing to the "Label Format Options" dialog box. The dialog box has tabs for "View", "Regional Settings", "Comments", and "General". The "View" tab is active, showing settings for "Rulers" and "Grid".

Allows items to be fixed to positions on the surrounding ruler marks.

Allows items to be fixed to positions on the specified grid.

Shows the specified grid on the label format.

Locking items



Clicking Lock fixes items to the label which can then only be edited by clicking Unlock when the item is selected.